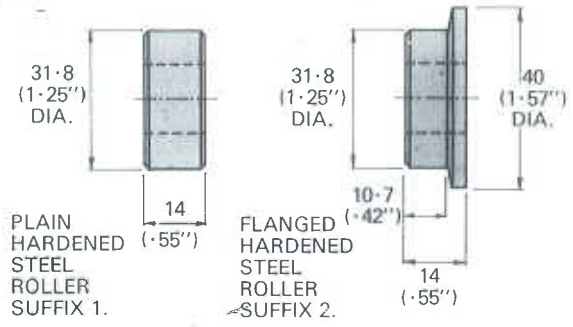
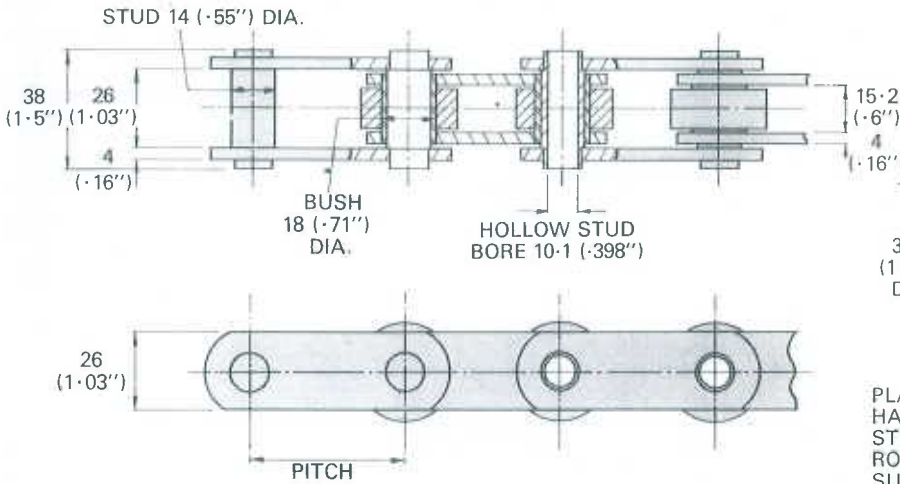




Chain Series D

Hollow Stud 27 kN (6,000 lb) TS.
 Solid Stud 33 kN (7,500 lb) TS.
 Stud/Bush Bearing Area 350 mm²

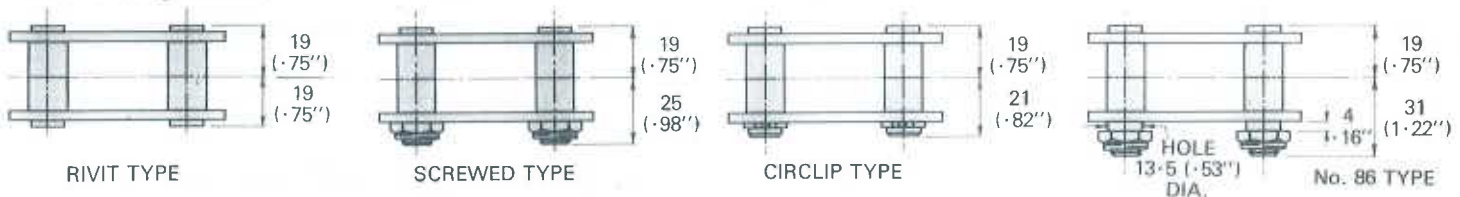
- Finish**
- a. Normal — dipped in grease.
 - b. Works — lightly oiled.
 - c. Oven — graphite coating.
 - d. Zinc — zinc coating throughout.
 - e. Moly — MoS₂ coating, round parts only.
 - f. Rape — dipped in rape oil.
 - g. Oil — dipped in light machine oil.
- Materials**
- k. Normal — standard steels.
 - l. Enhanced — special materials and/or heat treatment.
 - r. Low Corrosion — 431 hardened stainless round parts.
 - s. Medium Corrosion — 431 hardened stainless round parts other components in 300 stainless.
 - u. Higher Corrosion — 300 stainless throughout.
 - w. Marine/Chemical — 316 stainless throughout.
 - y. Hot Oven — 310 stainless, except attachments.



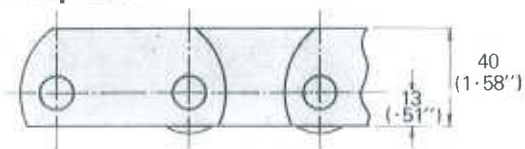
| PITCH | ROLLERLESS CHAIN | | PLAIN ROLLER CHAIN | | FLANGED ROLLER CHAIN | | |
|-----------------------------------|------------------|--------|--------------------|--------------|----------------------|-----------|------|
| | mm | in | REFERENCE | MASS kg/m | REFERENCE | MASS kg/m | |
| HOLLOW STUD CHAIN 27kN TS. | | | | | | | |
| 50.8 | 2.0 | A08D9 | 2.61 | A08D1 | 3.50 | A08D2 | 4.00 |
| 75 | 2.95 | A75D9 | 2.31 | A75D1 | 2.90 | A75D2 | 3.23 |
| 76.2 | 3.0 | A12D9 | 2.29 | A12D1 | 2.88 | A12D2 | 3.21 |
| 100 | 3.94 | A100D9 | 2.15 | A100D1 | 2.60 | A100D2 | 2.84 |
| 101.6 | 4.0 | A16D9 | 2.13 | A16D1 | 2.58 | A16D2 | 2.82 |
| 125 | 4.92 | A125D9 | 2.06 | A125D1 | 2.41 | A125D2 | 2.61 |
| 152.4 | 6.0 | A24D9 | 1.97 | A24D1 | 2.27 | A24D2 | 2.43 |
| SOLID STUD CHAIN 33 kN TS. | | | | | | | |
| 50.8 | 2.0 | B08D9 | 3.07 | B08D1 | 3.95 | B08D2 | 4.45 |
| 75 | 2.95 | B75D9 | 2.62 | B75D1 | 3.21 | B75D2 | 3.53 |
| 76.2 | 3.0 | B12D9 | 2.59 | B12D1 | 3.19 | B12D2 | 3.51 |
| 100 | 3.94 | B100D9 | 2.39 | B100D1 | 2.82 | B100D2 | 3.07 |
| 101.6 | 4.0 | B16D9 | 2.36 | B16D1 | 2.80 | B16D2 | 3.05 |
| 125 | 4.92 | B125D9 | 2.24 | B125D1 | 2.58 | B125D2 | 2.79 |
| 152.4 | 6.0 | B24D9 | 2.12 | B24D1 | 2.42 | B24D2 | 2.58 |

Also available with plain 31.8 (1.25") dia. Delrin Roller (Suffix 26) or Plain Hardened Steel Rollers 25.4 (1") dia. and 38.1 (1.5") dia. (Suffix 13 and 11 respectively). Stock chains in bold type. Thickness of Sidebars in Stainless Steel increased from 4 to 5 and overall width of chain from 38 to 42

Connecting Links



Deep Link



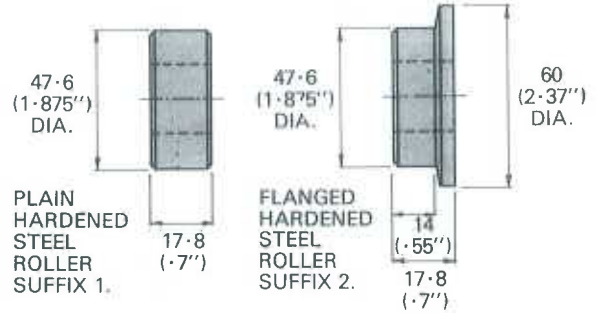
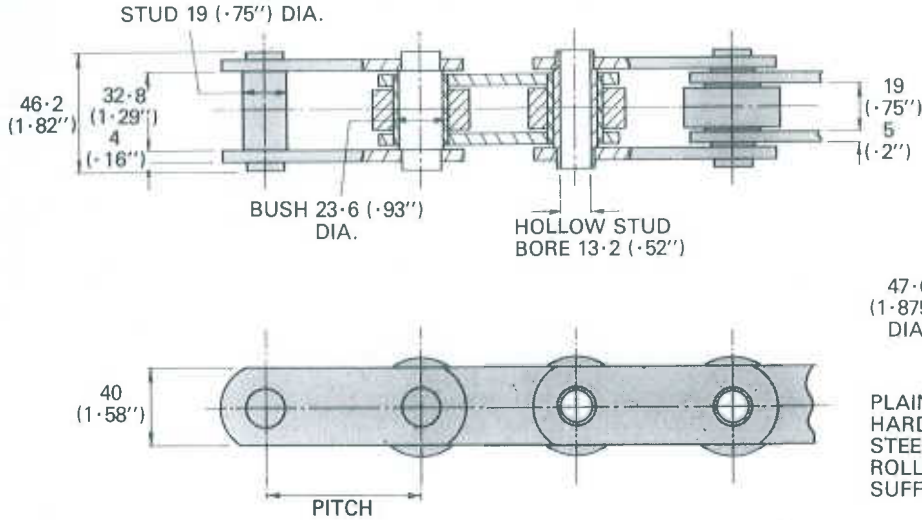
| PITCH | mm | 50.8 | 75 | 76.2 | 100 | 101.6 | 125 | 152.4 |
|---------------------------|----|-------|-------|-------|--------|-------|--------|-------|
| | in | 2.0 | 2.95 | 3.0 | 3.94 | 4.0 | 4.92 | 6.0 |
| CHAIN REF. (PLAIN ROLLER) | | D08D1 | D75D1 | D12D1 | D100D1 | D16D1 | D125D1 | D24D1 |
| EXTRA MASS kg/m | | 1.02 | 0.96 | 0.95 | 0.92 | | 0.88 | 0.87 |

Also available as **DOUBLE STRENGTH** chain.

Chain Series G

Hollow Stud 54 kN (12,000 lb) TS.
Solid Stud 67 kN (15,000 lb) TS.
Stud/Bush Bearing Area 600 mm²

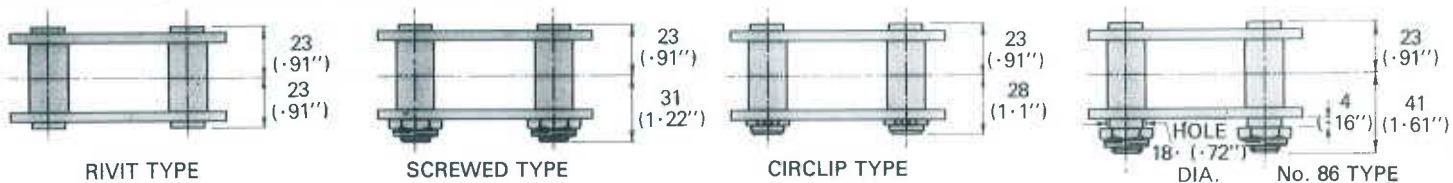
- Finish**
- a. Normal — dipped in grease.
 - b. Works — lightly oiled.
 - c. Oven — graphite coating.
 - d. Zinc — zinc coating throughout.
 - e. Moly — MoS₂ coating, round parts only.
 - f. Rape — dipped in rape oil.
 - g. Oil — dipped in light machine oil.
- Materials**
- k. Normal — standard steels.
 - l. Enhanced — special materials and/or heat treatment.
 - r. Low Corrosion — 431 hardened stainless round parts.
 - s. Medium Corrosion — 431 hardened stainless round parts other components in 300 stainless.
 - u. Higher Corrosion — 300 stainless throughout.
 - w. Marine/Chemical — 316 stainless throughout.
 - y. Hot Oven — 310 stainless, except attachments.



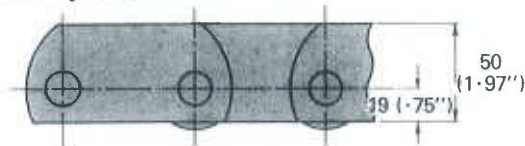
| PITCH mm in | ROLLERLESS CHAIN | | PLAIN ROLLER CHAIN | | FLANGED ROLLER CHAIN | |
|------------------------------------|------------------|--------------|--------------------|--------------|----------------------|--------------|
| | REFERENCE | MASS kg/m | REFERENCE | MASS kg/m | REFERENCE | MASS kg/m |
| HOLLOW STUD CHAIN 54 kN TS. | | | | | | |
| 76.2 3.0 | A12G9 | 4.45 | A12G1 | 6.95 | A12G2 | 7.35 |
| 100 3.94 | A100G9 | 4.09 | A100G1 | 5.96 | A100G2 | 6.23 |
| 101.6 4.0 | A16G9 | 4.05 | A16G1 | 5.92 | A16G2 | 6.20 |
| 125 4.92 | A125G9 | 3.82 | A125G1 | 5.33 | A125G2 | 5.55 |
| 150 5.91 | A150G9 | 3.67 | A150G1 | 4.92 | A150G2 | 5.12 |
| 152.4 6.0 | A24G9 | 3.65 | A24G1 | 4.90 | A24G2 | 5.10 |
| 203.2 8.0 | A32G9 | 3.45 | A32G1 | 4.40 | A32G2 | 4.53 |
| SOLID STUD CHAIN 67 kN TS. | | | | | | |
| 76.2 3.0 | B12G9 | 5.14 | B12G1 | 7.64 | B12G2 | 8.04 |
| 100 3.94 | B100G9 | 4.61 | B100G1 | 6.47 | B100G2 | 6.77 |
| 101.6 4.0 | B16G9 | 4.57 | B16G1 | 6.44 | B16G2 | 6.74 |
| 125 4.92 | B125G9 | 4.24 | B125G1 | 5.75 | B125G2 | 5.97 |
| 150 5.91 | B150G9 | 3.98 | B150G1 | 5.27 | B150G2 | 5.45 |
| 152.4 6.0 | B24G9 | 4.00 | B24G1 | 5.25 | B24G2 | 5.45 |
| 203.2 8.0 | B32G9 | 3.71 | B32G1 | 4.65 | B32G2 | 4.80 |

Also available with 38.1 (1.5") dia. Plain Hardened Rollers, suffix 15.
Stock chains in bold type.

Connecting Links



Deep Link

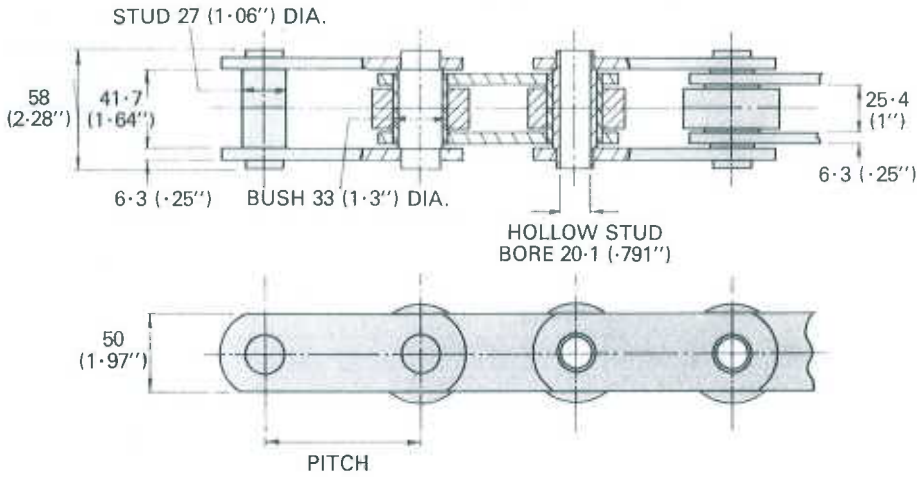


| PITCH | mm | 76.2 | 100 | 101.6 | 125 | 150 | 152.4 | 203.2 |
|-----------------------------------|----|-------|--------|-------|--------|--------|-------|-------|
| | in | 3 | 3.94 | 4 | 4.92 | 5.91 | 6 | 8 |
| CHAIN REFERENCE (Plain Roller) | | D12G1 | D100G1 | D16G1 | D125G1 | D150G1 | D24G1 | D32G1 |
| EXTRA MASS kg/m | | 0.97 | 0.94 | 0.94 | 0.93 | 0.91 | 0.91 | 0.88 |

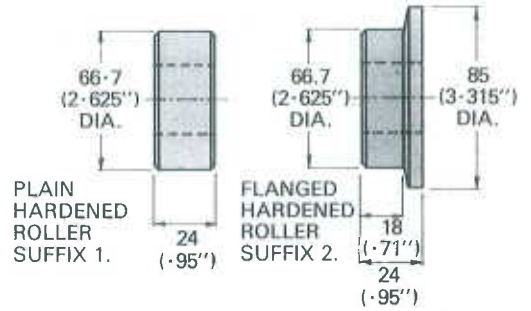
Also available in **DOUBLE STRENGTH** chain.

Chain Series H

Hollow Stud 107 kN (24,000 lb) TS.
 Solid Stud 134 kN (30,000 lb) TS.
 Stud/Bush Bearing Area 1100 mm²



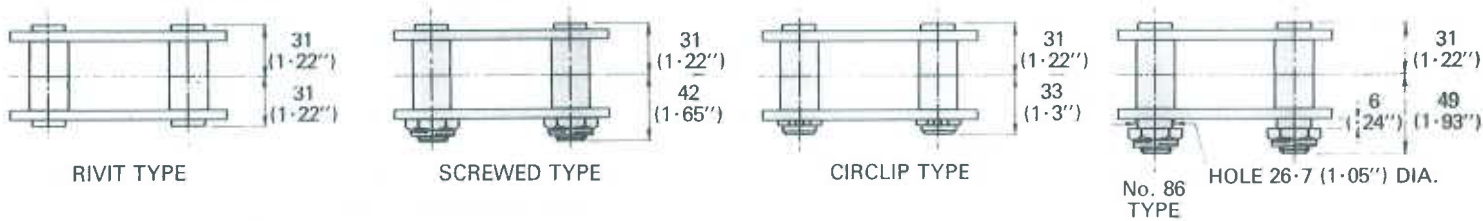
- Finish**
- a. Normal — dipped in grease.
 - b. Works — lightly oiled.
 - c. Oven — graphite coating.
 - d. Zinc — zinc coating throughout.
 - e. Moly — MoS₂ coating, round parts only.
 - f. Rape — dipped in rape oil.
 - g. Oil — dipped in light machine oil.
- Materials**
- k. Normal — standard steels.
 - l. Enhanced — special materials and/or heat treatment.
 - m. Low Corrosion — 431 hardened stainless round parts.
 - n. Medium Corrosion — 431 hardened stainless round parts other components in 300 stainless.
 - u. Higher Corrosion — 300 stainless throughout.
 - w. Marine/Chemical — 316 stainless throughout.
 - y. Hot Oven — 310 stainless, except attachments.



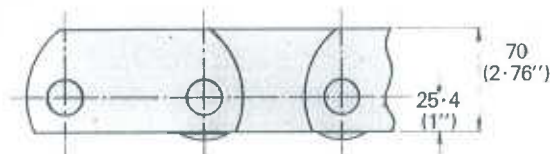
| PITCH | ROLLERLESS CHAIN | | PLAIN ROLLER CHAIN | | FLANGED ROLLER CHAIN | | | |
|-------------------------------------|------------------|----|--------------------|-----------|----------------------|-----------|-----------|-----------|
| | mm | in | REFERENCE | MASS kg/m | REFERENCE | MASS kg/m | REFERENCE | MASS kg/m |
| HOLLOW STUD CHAIN 107 kN TS. | | | | | | | | |
| 100 | 3.94 | | A100H9 | 7.97 | A100H1 | 12.97 | A100H2 | 13.97 |
| 101.6 | 4.0 | | A16H9 | 7.85 | A16H1 | 12.77 | A16H2 | 13.75 |
| 125 | 4.92 | | A125H9 | 7.38 | A125H1 | 11.38 | A125H2 | 12.18 |
| 127 | 5.0 | | A20H9 | 7.29 | A20H1 | 11.23 | A20H2 | 12.02 |
| 150 | 5.91 | | A150H9 | 7.01 | A150H1 | 10.34 | A150H2 | 11.01 |
| 152.4 | 6.0 | | A24H9 | 6.92 | A24H1 | 10.20 | A24H2 | 10.85 |
| 177.8 | 7.0 | | A28H9 | 6.67 | A28H1 | 9.48 | A28H2 | 10.04 |
| 203.2 | 8.0 | | A32H9 | 6.47 | A32H1 | 8.93 | A32H2 | 9.40 |
| 228.6 | 9.0 | | A36H9 | 6.32 | A36H1 | 8.51 | A36H2 | 8.94 |
| 254.0 | 10.0 | | A40H9 | 6.20 | A40H1 | 8.17 | A40H2 | 8.57 |
| 304.8 | 12.0 | | A48H9 | 6.01 | A48H1 | 7.65 | A48H2 | 7.98 |
| SOLID STUD CHAIN 134 kN TS. | | | | | | | | |
| 100 | 3.94 | | B100H9 | 9.45 | B100H1 | 14.45 | B100H2 | 15.45 |
| 101.6 | 4.0 | | B16H9 | 9.32 | B16H1 | 14.24 | B16H2 | 15.20 |
| 125 | 4.92 | | B125H9 | 8.61 | B125H1 | 12.61 | B125H2 | 13.41 |
| 127 | 5.0 | | B20H9 | 8.48 | B20H1 | 12.42 | B20H2 | 13.21 |
| 150 | 5.91 | | B150H9 | 8.04 | B150H1 | 11.37 | B150H2 | 12.04 |
| 152.4 | 6.0 | | B24H9 | 7.92 | B24H1 | 11.20 | B24H2 | 11.85 |
| 177.8 | 7.0 | | B28H9 | 7.51 | B28H1 | 10.32 | B28H2 | 10.88 |
| 203.2 | 8.0 | | B32H9 | 7.21 | B32H1 | 9.67 | B32H2 | 10.16 |
| 228.6 | 9.0 | | B36H9 | 6.98 | B36H1 | 9.15 | B36H2 | 9.60 |
| 254.0 | 10.0 | | B40H9 | 6.79 | B40H1 | 8.76 | B40H2 | 9.15 |
| 304.8 | 12.0 | | B48H9 | 6.51 | B48H1 | 8.43 | B48H2 | 8.76 |

Also available with 47.6 (1.875") dia. Plain Rollers, Suffix 26 or fitted with Integral Double Row Ball Bearing (16-3/8" dia. Balls). Solid Stud chains can be fitted with grease nipple lubrication. Stock chains in bold type.

Connecting Links



Deep Link

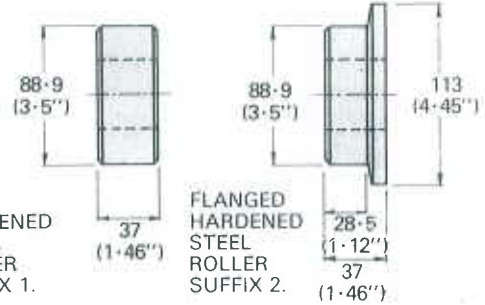
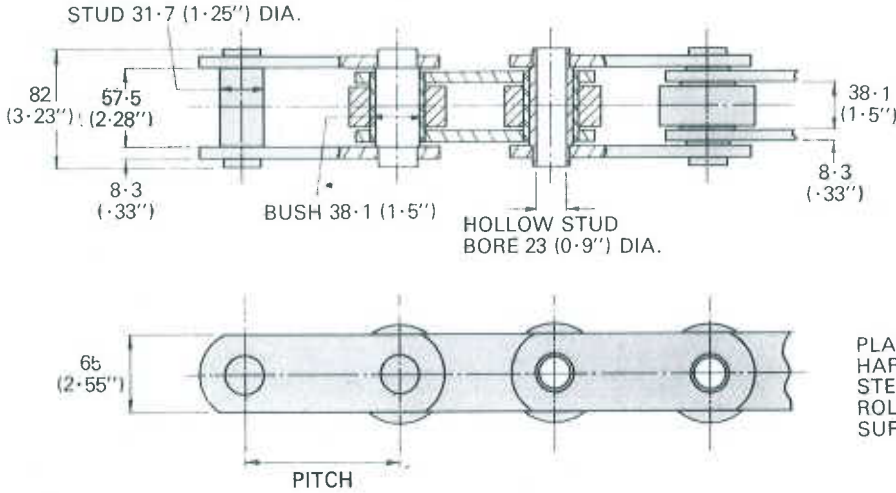


| PITCH | mm | 101.6 | 150 | 152.4 | 200 | 203.2 |
|---------------------------|----|-------|--------|-------|--------|-------|
| | in | 4.0 | 5.91 | 6.0 | 7.87 | 8.0 |
| CHAIN REF. (PLAIN ROLLER) | | D16H1 | D150H1 | D24H1 | D200H1 | D32H1 |
| EXTRA MASS kg/m | | 2.1 | 2.0 | 2.0 | 1.95 | 1.95 |

Chain Series K

Hollow Stud 160 kN (36,000 lb) TS.
Solid Stud 200 kN (45,000 lb) TS.
Stud/Bush Bearing Area 1800 mm²

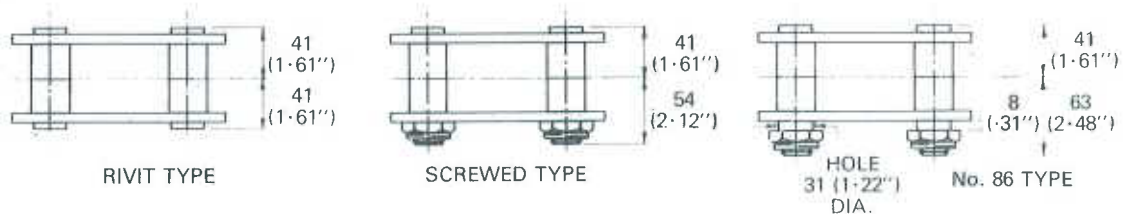
- Finish**
- a. Normal — dipped in grease.
 - b. Works — lightly oiled.
 - c. Oven — graphite coating.
 - d. Zinc — zinc coating throughout.
 - e. Moly — MoS₂ coating, round parts only.
 - f. Rape — dipped in rape oil.
 - g. Oil — dipped in light machine oil.
- Materials**
- k. Normal — standard steels.
 - l. Enhanced — special materials and/or heat treatment.
 - r. Low Corrosion — 431 hardened stainless steel round parts.
 - s. Medium Corrosion — 431 hardened stainless steel round parts other components in 300 stainless.
 - u. Higher Corrosion — 300 stainless throughout.
 - w. Marine/Chemical — 316 stainless throughout.
 - y. Hot Oven — 310 stainless, except attachments.



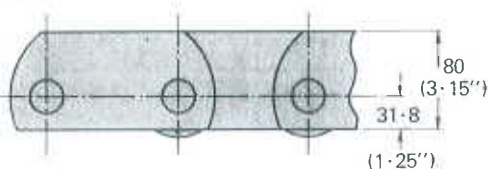
| PITCH mm in | ROLLERLESS CHAIN | | PLAIN ROLLER CHAIN | | FLANGED ROLLER CHAIN | |
|-------------------------------------|------------------|--------------|--------------------|--------------|----------------------|--------------|
| | REFERENCE | MASS kg/m | REFERENCE | MASS kg/m | REFERENCE | MASS kg/m |
| HOLLOW STUD CHAIN 160 kN TS. | | | | | | |
| 152.4 6.0 | A24K9 | 11.65 | A24K1 | 22.15 | A24K2 | 23.45 |
| 190.5 7.5 | A30K9 | 11.00 | A30K1 | 19.40 | A30K2 | 20.45 |
| 203.2 8.0 | A32K9 | 10.79 | A32K1 | 18.60 | A32K2 | 19.65 |
| 228.6 9.0 | A36K9 | 10.51 | A36K1 | 17.50 | A36K2 | 18.38 |
| 304.8 12.0 | A48K9 | 9.92 | A48K1 | 15.13 | A48K2 | 15.80 |
| SOLID STUD CHAIN 200 kN TS. | | | | | | |
| 152.4 6.0 | B24K9 | 13.70 | B24K1 | 24.06 | B24K2 | 25.55 |
| 190.5 7.5 | B30K9 | 12.55 | B30K1 | 20.50 | B30K2 | 22.05 |
| 203.2 8.0 | B32K9 | 12.20 | B32K1 | 20.10 | B32K2 | 21.10 |
| 228.6 9.0 | B36K9 | 11.80 | B36K1 | 18.75 | B36K2 | 19.70 |
| 304.8 12.0 | B48K9 | 10.90 | B48K1 | 16.12 | B48K2 | 16.80 |

Also available with 47.6 (1.875") dia. Plain Rollers, suffix 12 or fitted with Integral Double Row Ball Bearing (16-³/₈" dia. Balls). Solid Stud Chains can be fitted with grease nipple lubrication.

Connecting Links



Deep Link



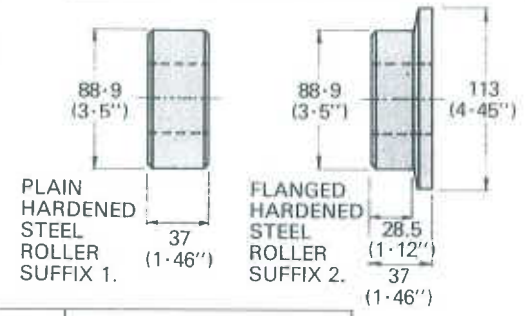
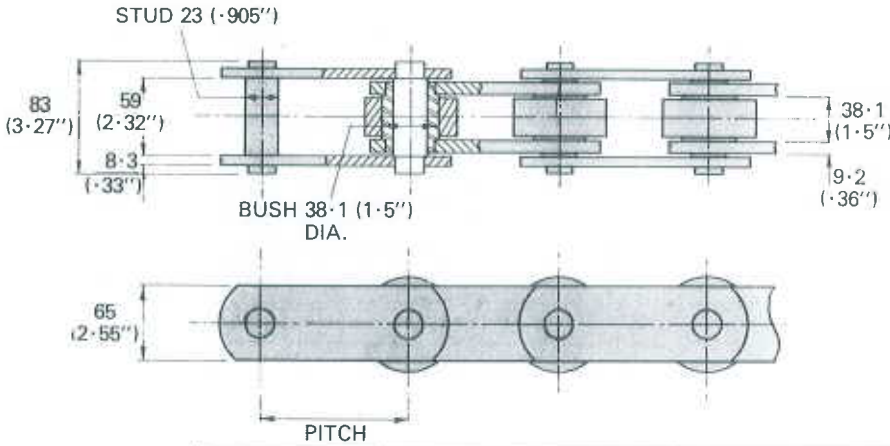
| PITCH | mm | 152.4 | 203.2 | 228.6 | 304.8 |
|---------------------------|----|-------|-------|-------|-------|
| | in | 6.0 | 8.0 | 9.0 | 12.0 |
| CHAIN REF. (PLAIN ROLLER) | | D24K1 | D32K1 | D36K1 | D48K1 |
| EXTRA MASS kg/m | | 2.10 | 2.00 | 1.99 | 1.96 |



Chain Series L

Solid Stud 267 kN (60,000 lb) TS.
Commonly enhanced to 400 kN (90,000 lb)
Stud/Bush Bearing Area 1300 mm²

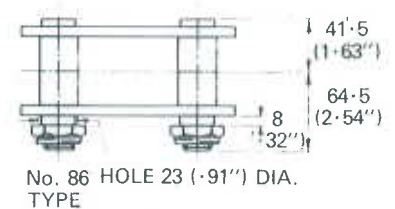
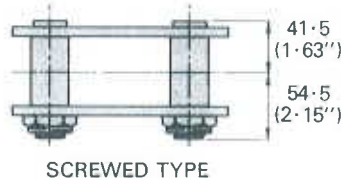
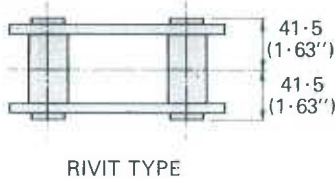
- Finish**
- a. Normal — dipped in grease.
 - b. Works — lightly oiled.
 - c. Oven — graphite coating.
 - d. Zinc — zinc coating throughout.
 - e. Moly — MoS₂ coating, round parts only.
 - f. Rape — dipped in rape oil.
 - g. Oil — dipped in light machine oil.
- Materials**
- h. Normal — standard steels.
 - i. Enhanced — special materials and/or heat treatment.
 - j. Low Corrosion — 431 hardened stainless round parts.
 - s. Medium Corrosion — 431 hardened stainless round parts other components in 300 stainless.
 - u. Higher Corrosion — 300 stainless throughout.
 - w. Marine/Chemical — 316 stainless throughout.
 - y. Hot Oven — 310 stainless, except attachments.



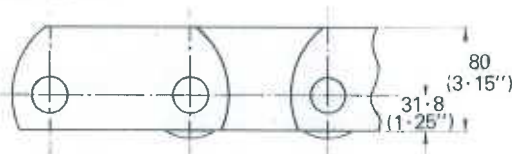
| PITCH | ROLLERLESS CHAIN | | PLAIN ROLLER CHAIN | | FLANGED ROLLER CHAIN | | |
|-------|------------------|-------|--------------------|-----------|----------------------|-----------|-------|
| | mm | in | REF. | MASS kg/m | REF. | MASS kg/m | REF. |
| 152.4 | 6.0 | B24L9 | 13.42 | B24L1 | 23.18 | B24L2 | 25.13 |
| 190.5 | 7.5 | B30L9 | 12.37 | B30L1 | 20.31 | B30L2 | 21.31 |
| 203.2 | 8.0 | B32L9 | 12.00 | B32L1 | 19.81 | B32L2 | 20.93 |
| 228.6 | 9.0 | B36L9 | 11.62 | B36L1 | 18.53 | B36L2 | 19.53 |
| 304.8 | 12.0 | B48L9 | 10.77 | B48L1 | 15.98 | B48L2 | 16.73 |
| 381.0 | 15.0 | B60L9 | 10.25 | B60L1 | 14.40 | B60L2 | 15.00 |

Also available with 47.6 (1.875") dia. Plain Hardened Rollers, Suffix 12; 127 (5") dia. Plain Hardened Rollers, Suffix 7, or fitted with Integral Double Row Ball Bearing (18-3/8" dia. Balls). Chains can be fitted with grease nipples.

Connecting Links



Deep Link

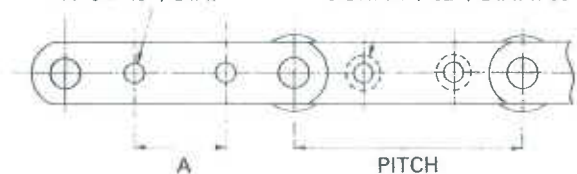


| PITCH | mm | 152.4 | 190.5 | 203.2 | 228.6 | 304.8 | 381.0 |
|------------|------|-------|-------|-------|-------|-------|-------|
| | in | 6.0 | 7.5 | 8.0 | 9.0 | 12.0 | 15.0 |
| EXTRA MASS | kg/m | 2.23 | 2.18 | 2.13 | 2.12 | 2.08 | 1.95 |

Two Attachment Holes

ONE OR BOTH SIDES OF CHAIN

11.5 (.45") DIA. C'SK. 21 (.82") DIA. x 90°



Central Attachment Hole

BOTH SIDES OF CHAIN

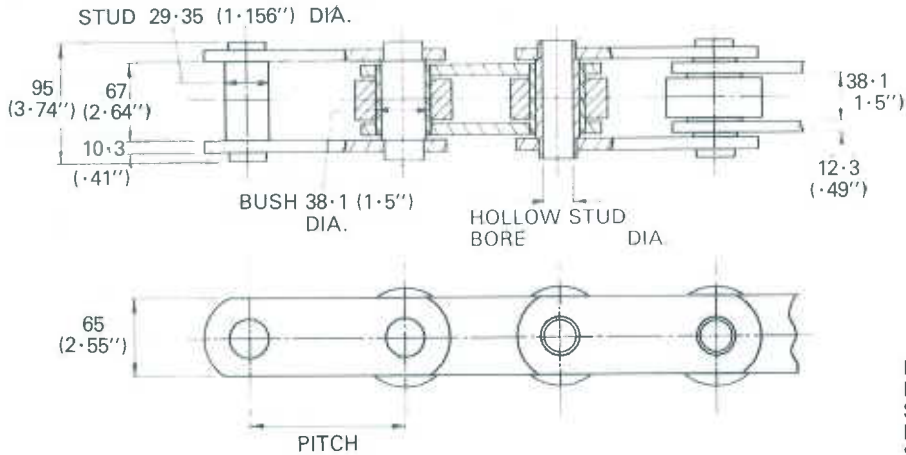


| PITCH | mm | 152.4 | 190.5 | 203.2 | 228.6 | 304.8 |
|-------|----|-------|-------|-------|-------|-------|
| | in | 6.0 | 7.5 | 8.0 | 9.0 | 12.0 |
| A | | 44.5 | 82.6 | 82.6 | 114.3 | 190.5 |

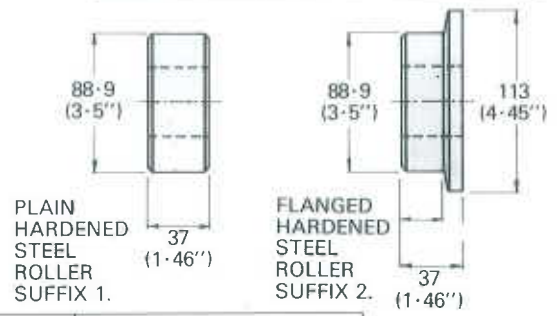
Dimension A applies to a chain with a Plain 3.5" dia. Roller. For other situations modify appropriately.

Chain Series M

Solid Stud 400 kN (85,000 lb) TS.
Commonly enhanced to 540 kN (120,000 lb)
Stud/Bush Bearing Area 1900 mm²



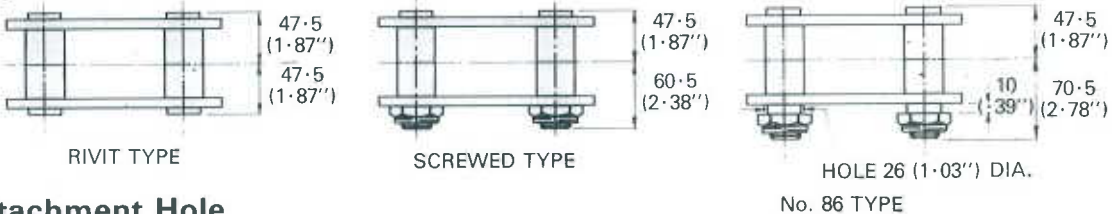
- Finish**
- a. Normal — dipped in grease.
 - b. Works — lightly oiled.
 - c. Oven — graphite coating.
 - d. Zinc — zinc coating throughout.
 - e. Moly — MoS₂ coating, round parts only.
 - f. Rape — dipped in rape oil.
 - g. Oil — dipped in light machine oil.
- Materials**
- k. Normal — standard steels.
 - l. Enhanced — special materials and/or heat treatment.
 - r. Low Corrosion — 431 hardened stainless round parts.
 - u. Medium Corrosion — 431 hardened stainless round parts other components in 300 stainless.
 - w. Higher Corrosion — 300 stainless throughout.
 - y. Marine/Chemical — 316 stainless throughout.
 - y. Hot Oven — 310 stainless, except attachments.



| PITCH | ROLLERLESS CHAIN | | PLAIN ROLLER CHAIN | | FLANGED ROLLER CHAIN | | |
|-------|------------------|-------|--------------------|-----------|----------------------|-----------|-------|
| | mm | in | REF. | MASS kg/m | REF. | MASS kg/m | REF. |
| 152.4 | 6.0 | B24M9 | 19.62 | B24M1 | 30.20 | B24M2 | 31.43 |
| 190.5 | 7.5 | B30M9 | 17.93 | B30M1 | 26.33 | B30M2 | 27.38 |
| 203.2 | 8.0 | B32M9 | 17.52 | B32M1 | 25.39 | B32M2 | 26.37 |
| 228.6 | 9.0 | B36M9 | 16.82 | B36M1 | 23.82 | B36M2 | 24.70 |
| 304.8 | 12.0 | B48M9 | 15.40 | B48M1 | 20.65 | B48M2 | 21.30 |
| 381.0 | 15.0 | B60M9 | 14.57 | B60M1 | 18.77 | B60M2 | 19.21 |

Also available with 47.6 (1.875'') or 127 (5'') dia. Plain & Hardened Rollers, Suffix 12 & 7 respectively. Chains can be fitted with grease nipples.

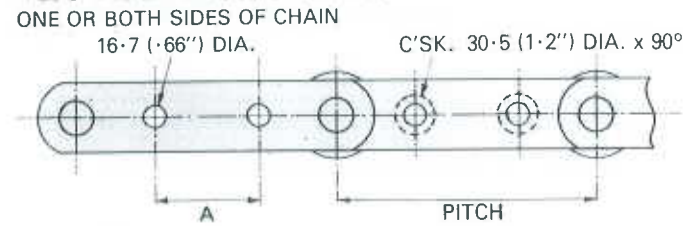
Connecting Links



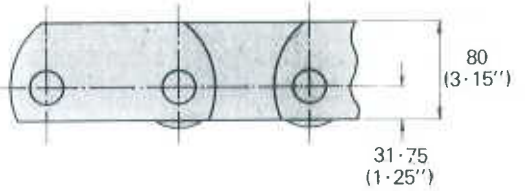
Central Attachment Hole



Two Attachment Holes



Deep Link



| PITCH | mm | 190.5 | 203.2 | 228.6 | 304.8 | 381.0 |
|-------|----|-------|-------|-------|-------|-------|
| | in | 7.5 | 8.0 | 9.0 | 12.0 | 15.0 |
| A | | 50.8 | 50.8 | 108.0 | 184.2 | 184.2 |

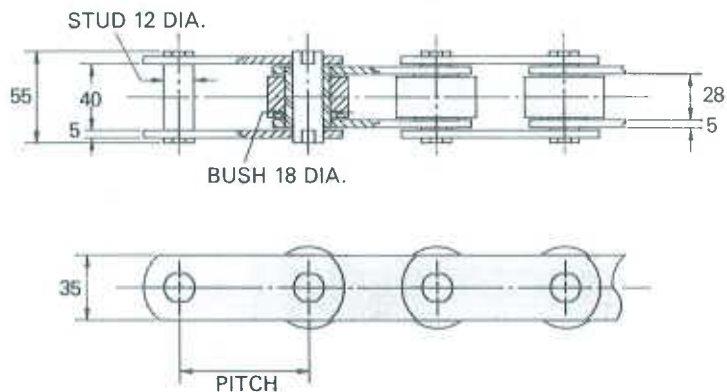
| PITCH | mm | 152.4 | 203.2 | 228.6 | 304.8 | 381.0 |
|------------|------|-------|-------|-------|-------|-------|
| | in | 6.0 | 8.0 | 9.0 | 12.0 | 15.0 |
| EXTRA MASS | kg/m | 2.9 | 2.9 | 2.8 | 2.8 | 2.6 |

Dimension A applies to a chain with a Plain 3.5" dia. Roller. For other situations modify appropriately.



Chain Series M 80

Solid Stud 80 kN (8,185 kgf) TS.
Stud/Bush Bearing Area 470 mm²

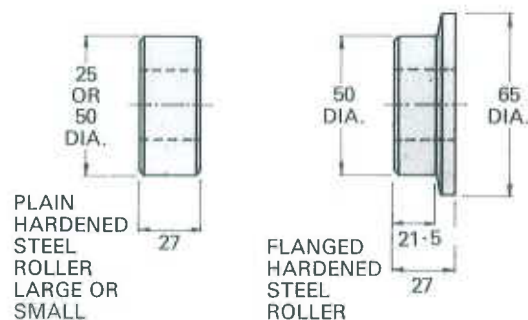


Finish

- a. Normal — dipped in grease.
- b. Works — lightly oiled.
- c. Oven — graphite coating.
- d. Zinc — zinc coating throughout.
- e. Moly — MoS₂ coating, round parts only.
- f. Rape — dipped in rape oil.
- g. Oil — dipped in light machine oil.

Materials

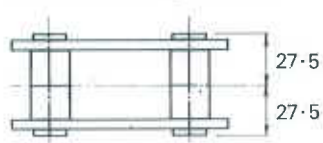
- k. Normal — standard steels.
- l. Enhanced — special materials and/or heat treatment.
- r. Low Corrosion — 431 hardened stainless round parts.
- s. Medium Corrosion — 431 hardened stainless round parts other components in 300 stainless.
- u. Higher Corrosion — 300 stainless throughout.
- w. Marine/Chemical — 316 stainless throughout.
- y. Hot Oven — 310 stainless, except attachments.



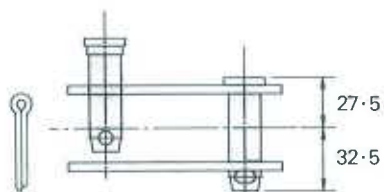
| PITCH | ROLLERLESS | | SMALL PLAIN ROLLER | | LARGE PLAIN ROLLER | | FLANGED ROLLER | |
|-------|------------|-------------|--------------------|-------------|--------------------|-------------|----------------|-------------|
| | REF. | WEIGHT kg/m | REF. | WEIGHT kg/m | REF. | WEIGHT kg/m | REF. | WEIGHT kg/m |
| 80 | M80R80 | 4.7 | M80S80 | 5.3 | M80L80 | 9.3 | M80F80 | 10.0 |
| 100 | M80R100 | 4.3 | M80S100 | 4.8 | M80L100 | 8.0 | M80F100 | 8.6 |
| 125 | M80R125 | 4.0 | M80S125 | 4.4 | M80L125 | 6.9 | M80F125 | 7.6 |

Double flats on stud and bush.

Connecting Links

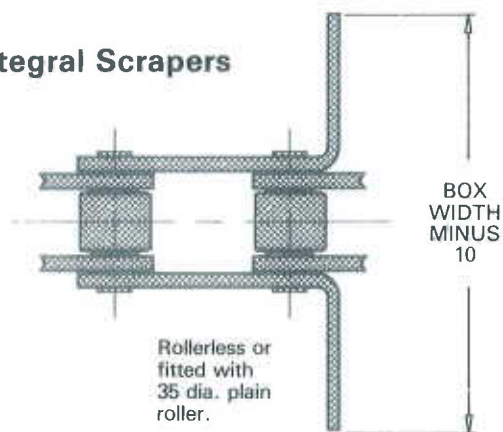


RIVIT TYPE



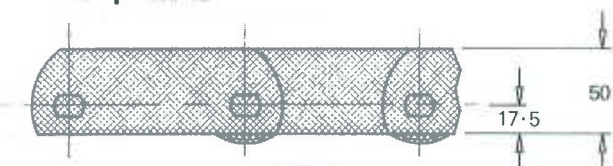
SPLIT PIN TYPE

Integral Scrapers

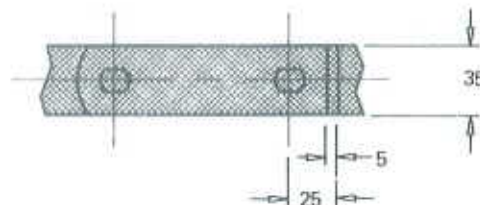


Rollerless or fitted with 35 dia. plain roller.

Deep Link



Fitted with Large Plain Hardened Roller 50 dia.



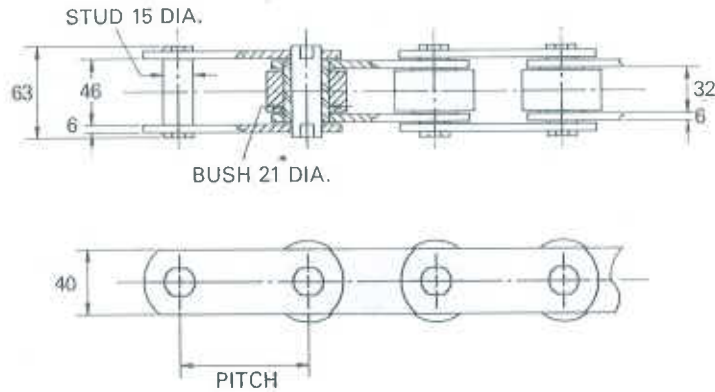
| PITCH | 80 | 100 | 125 |
|------------|--------|---------|---------|
| CHAIN REF. | N80L80 | N80L100 | N80L125 |
| MASS kg/m | 10.9 | 9.5 | 8.4 |

| WIDTH OF BOX | 150 | 200 | 250 | 300 |
|------------------------|-----|-----|------|------|
| EXTRA MASS kg PER PAIR | 0.1 | 0.2 | 0.25 | 0.35 |

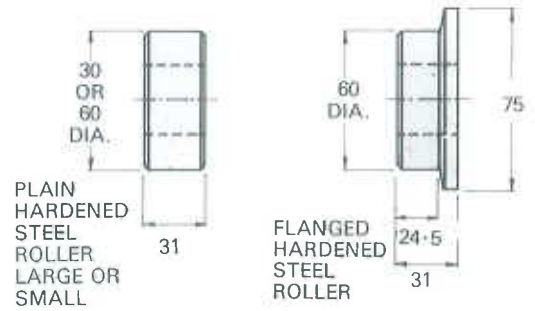
Chain Series M 112

Solid Stud 112 kN (11,421 kgf) TS.

Stud/Bush Bearing Area 675 mm²



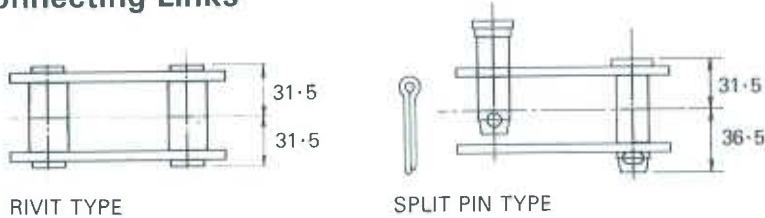
- Finish**
- a. Normal — dipped in grease.
 - b. Works — lightly oiled.
 - c. Oven — graphite coating.
 - d. Zinc — zinc coating throughout.
 - e. Moly — MoS₂ coating, round parts only.
 - f. Rape — dipped in rape oil.
 - g. Oil — dipped in light machine oil.
- Materials**
- k. Normal — standard steels.
 - l. Enhanced — special materials and/or heat treatment.
 - r. Low Corrosion — 431 hardened stainless round parts.
 - s. Medium Corrosion — 431 hardened stainless round parts other components in 300 stainless.
 - u. Higher Corrosion — 300 stainless throughout.
 - w. Marine/Chemical — 316 stainless throughout.
 - y. Hot Oven — 310 stainless, except attachments.



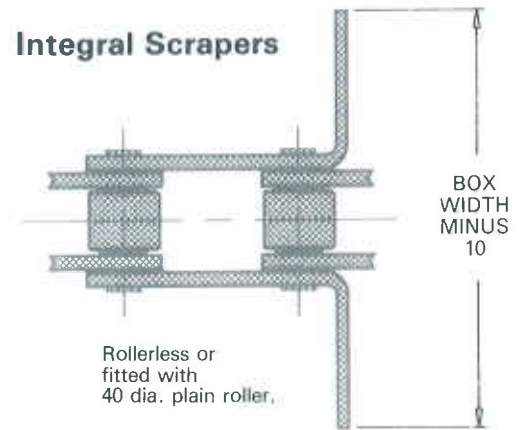
| PITCH | ROLLERLESS | | SMALL PLAIN ROLLER | | LARGE PLAIN ROLLER | | FLANGED ROLLER | |
|-------|------------|-------------|--------------------|-------------|--------------------|-------------|----------------|-------------|
| | REF. | WEIGHT kg/m | REF. | WEIGHT kg/m | REF. | WEIGHT kg/m | REF. | WEIGHT kg/m |
| 80 | M112R80 | 6.8 | M112S80 | 7.9 | M112L80 | 14.6 | M112F80 | 15.3 |
| 100 | M112R100 | 6.2 | M112S100 | 7.1 | M112L100 | 12.3 | M112F100 | 13.1 |
| 125 | M112R125 | 5.7 | M112S125 | 6.4 | M112L125 | 10.6 | M112F125 | 11.2 |
| 160 | M112R160 | 5.3 | M112S160 | 5.8 | M112L160 | 9.6 | M112F160 | 9.6 |

Double flats on stud and bush.

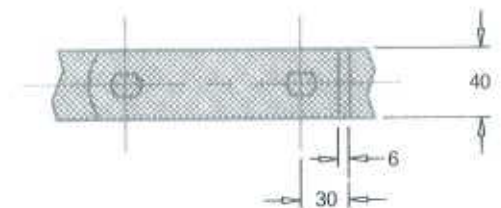
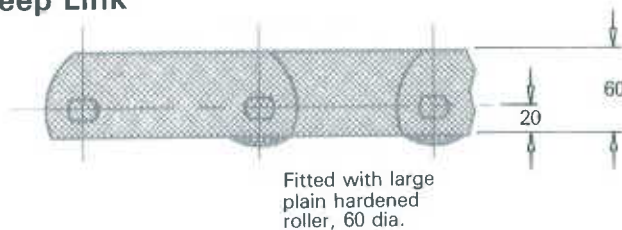
Connecting Links



Integral Scrapers



Deep Link



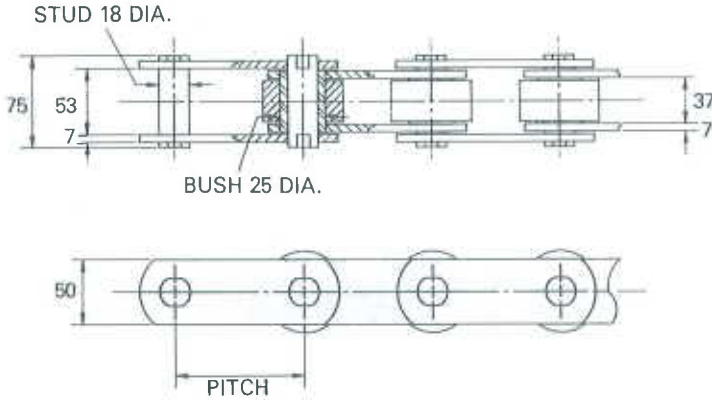
| PITCH | 80 | 100 | 125 | 160 |
|------------|---------|----------|----------|----------|
| CHAIN REF. | N112L80 | N112L100 | N112L125 | N112L160 |
| MASS kg/m | 17.1 | 14.7 | 12.8 | 11.3 |

| WIDTH OF BOX | 200 | 250 | 300 |
|------------------------|-----|-----|-----|
| EXTRA MASS kg PER PAIR | 0.3 | 0.4 | 0.5 |

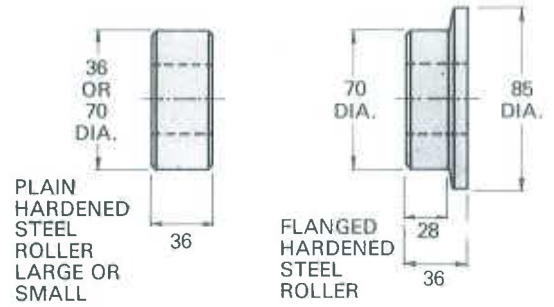
Chain Series M 160

Solid Stud 160 kN (16,315 kgf) TS.

Stud/Bush Bearing Area 920 mm²



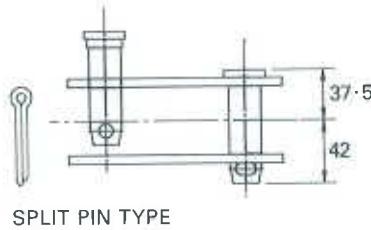
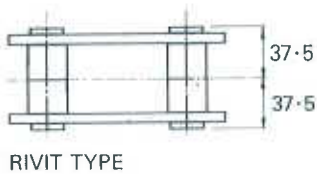
- Finish**
- a. Normal — dipped in grease.
 - b. Works — lightly oiled.
 - c. Oven — graphite coating.
 - d. Zinc — zinc coating throughout.
 - e. Moly — MoS₂ coating, round parts only.
 - f. Rape — dipped in rape oil.
 - g. Oil — dipped in light machine oil.
- Materials**
- k. Normal — standard steels.
 - l. Enhanced — special materials and/or heat treatment.
 - r. Low Corrosion — 431 hardened stainless round parts.
 - s. Medium Corrosion — 431 hardened stainless round parts other components in 300 stainless.
 - u. Higher Corrosion — 300 stainless throughout.
 - w. Marine/Chemical — 316 stainless throughout.
 - y. Hot Oven — 310 stainless, except attachments.



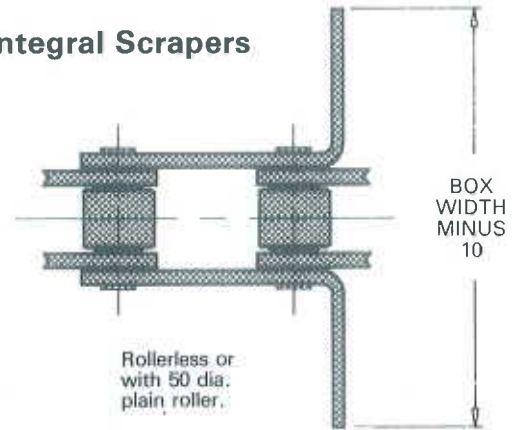
| PITCH | ROLLERLESS | | SMALL PLAIN ROLLER | | LARGE PLAIN ROLLER | | FLANGED ROLLER | |
|-------|------------|-------------|--------------------|-------------|--------------------|-------------|----------------|-------------|
| | REF. | WEIGHT kg/m | REF. | WEIGHT kg/m | REF. | WEIGHT kg/m | REF. | WEIGHT kg/m |
| 100 | M160R100 | 9.7 | M160S100 | 11.1 | M160L100 | 19.5 | M160F100 | 20.4 |
| 125 | M160R125 | 8.9 | M160S125 | 10.0 | M160L125 | 16.7 | M160F125 | 17.5 |
| 160 | M160R160 | 8.2 | M160S160 | 9.1 | M160L160 | 14.3 | M160F160 | 14.9 |
| 200 | M160R200 | 7.6 | M160S200 | 8.3 | M160L200 | 12.0 | M160F200 | 13.0 |
| 250 | M160R250 | 7.2 | M160S250 | 7.8 | M160L250 | 11.1 | M160F250 | 11.5 |

Double flats on stud and bush.

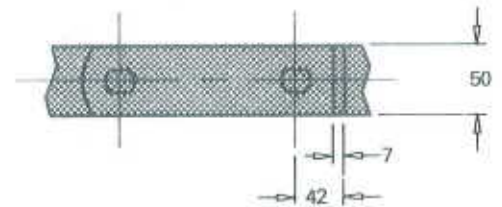
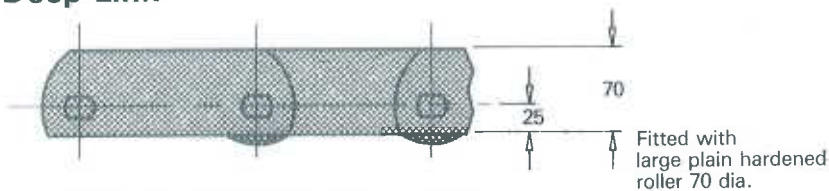
Connecting Links



Integral Scrapers



Deep Link



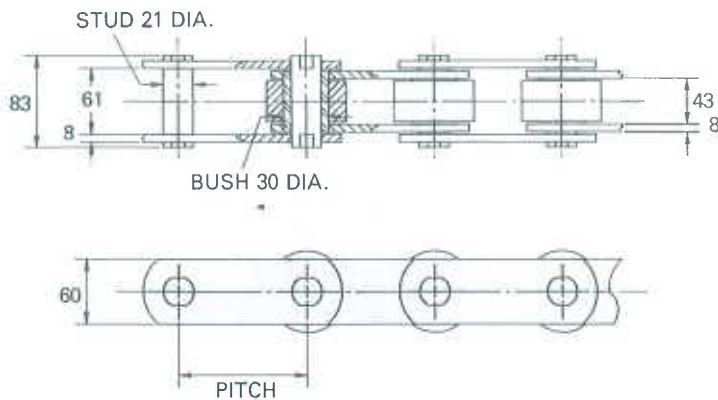
| PITCH | 100 | 125 | 160 | 200 | 250 |
|------------|----------|----------|----------|----------|----------|
| CHAIN REF. | N160L100 | N160L125 | N160L160 | N160L200 | N160L250 |
| MASS kg/m | 22.3 | 19.4 | 16.9 | 15.0 | 13.5 |

| WIDTH OF BOX | 200 | 250 | 300 | 350 |
|------------------------|-----|-----|-----|-----|
| EXTRA MASS kg PER PAIR | 0.4 | 0.5 | 0.7 | 0.8 |

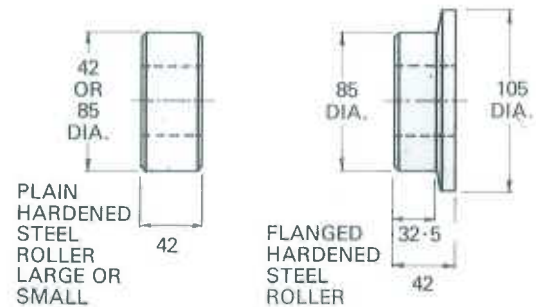
Chain Series M 224

Solid Stud 224 kN (22,842 kgf) TS.

Stud/Bush Bearing Area 1240 mm²



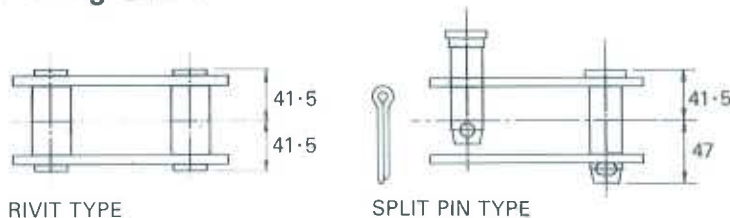
- Finish**
- a. Normal — dipped in grease.
 - b. Works — lightly oiled.
 - c. Oven — graphite coating.
 - d. Zinc — zinc coating throughout.
 - e. Moly — MoS₂ coating, round parts only.
 - f. Rape — dipped in rape oil.
 - g. Oil — dipped in light machine oil.
- Materials**
- k. Normal — standard steels.
 - l. Enhanced — special materials and/or heat treatment.
 - r. Low Corrosion — 431 hardened stainless round parts.
 - s. Medium Corrosion — 431 hardened stainless round parts other components in 300 stainless.
 - u. Higher Corrosion — 300 stainless throughout.
 - w. Marine/Chemical — 316 stainless throughout.
 - y. Hot Oven — 310 stainless, except attachments.



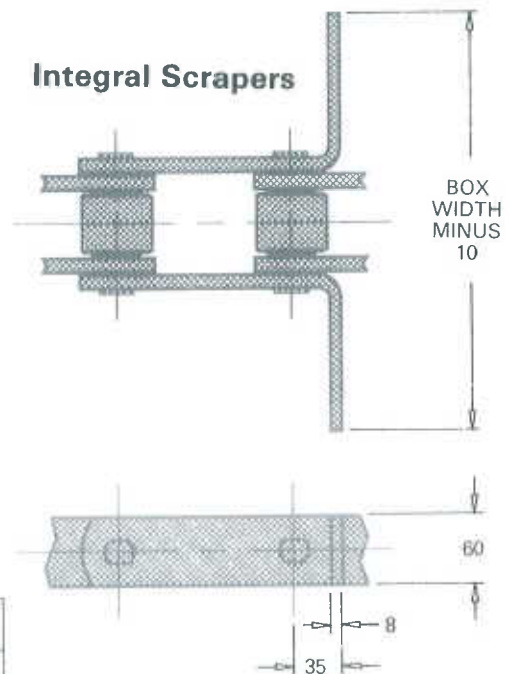
| PITCH | ROLLERLESS | | SMALL PLAIN ROLLER | | LARGE PLAIN ROLLER | | FLANGED ROLLER | |
|-------|------------|-------------|--------------------|-------------|--------------------|-------------|----------------|-------------|
| | REF. | WEIGHT kg/m | REF. | WEIGHT kg/m | REF. | WEIGHT kg/m | REF. | WEIGHT kg/m |
| 125 | M224R125 | 13.1 | M224S125 | 14.9 | M224L125 | 26.6 | M224F125 | 28.0 |
| 160 | M224R160 | 11.9 | M224S160 | 13.3 | M224L160 | 22.4 | M224F160 | 23.5 |
| 200 | M224R200 | 11.1 | M224S200 | 12.2 | M224L200 | 19.5 | M224F200 | 20.5 |
| 250 | M224R250 | 10.3 | M224S250 | 11.2 | M224L250 | 17.1 | M224F250 | 17.8 |
| 315 | M224R315 | 9.8 | M224S315 | 10.5 | M224L315 | 15.1 | M224F315 | 15.7 |
| 400 | M224R400 | 9.3 | M224S400 | 9.9 | M224L400 | 13.5 | M224F400 | 14.0 |

Double flats on stud and bush.

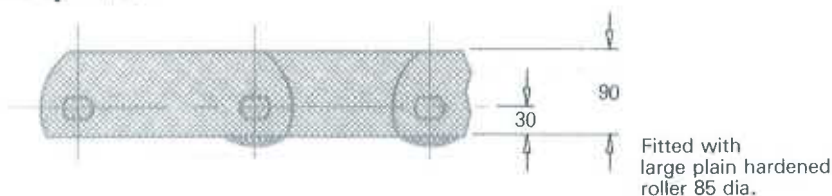
Connecting Links



Integral Scrapers



Deep Link



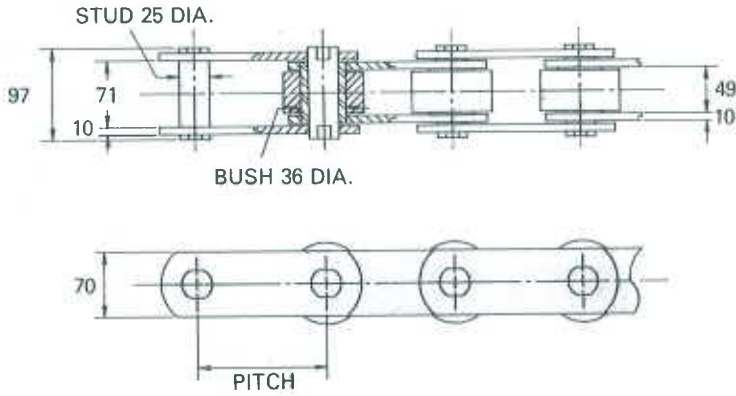
| PITCH | 125 | 160 | 200 | 250 | 315 | 400 |
|------------|----------|----------|----------|----------|----------|----------|
| CHAIN REF. | N224L125 | N224L160 | N224L200 | N224L250 | N224L315 | N224L400 |
| MASS kg/m | 31.6 | 27.1 | 24.0 | 21.5 | 19.3 | 17.6 |

| WIDTH OF BOX | 250 | 300 | 350 | 400 |
|------------------------|-----|-----|-----|-----|
| EXTRA MASS kg PER PAIR | 0.6 | 0.8 | 1.0 | 1.2 |

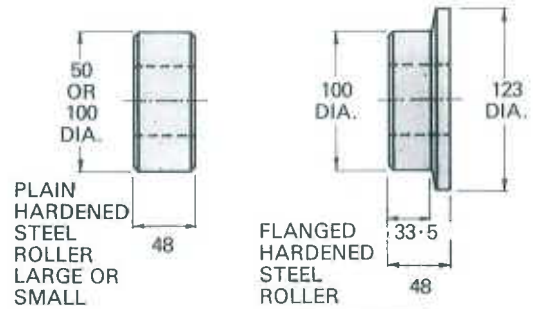
Chain Series M 315

Solid Stud 315 kN (32,212 kgf) TS.

Stud/Bush Bearing Area 1700 mm²



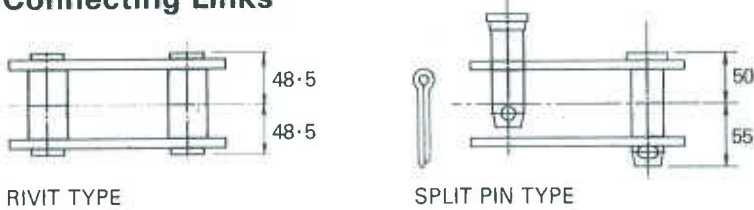
- Finish**
- a. Normal — dipped in grease.
 - b. Works — lightly oiled.
 - c. Oven — graphite coating.
 - d. Zinc — zinc coating throughout.
 - e. Moly — MoS₂ coating, round parts only.
 - f. Rape — dipped in rape oil.
 - g. Oil — dipped in light machine oil.
- Materials**
- k. Normal — standard steels.
 - l. Enhanced — special materials and/or heat treatment.
 - r. Low Corrosion — 431 hardened stainless round parts.
 - s. Medium Corrosion — 431 hardened stainless round parts other components in 300 stainless.
 - u. Higher Corrosion — 300 stainless throughout.
 - w. Marine/Chemical — 316 stainless throughout.
 - y. Hot Oven — 310 stainless, except attachments.



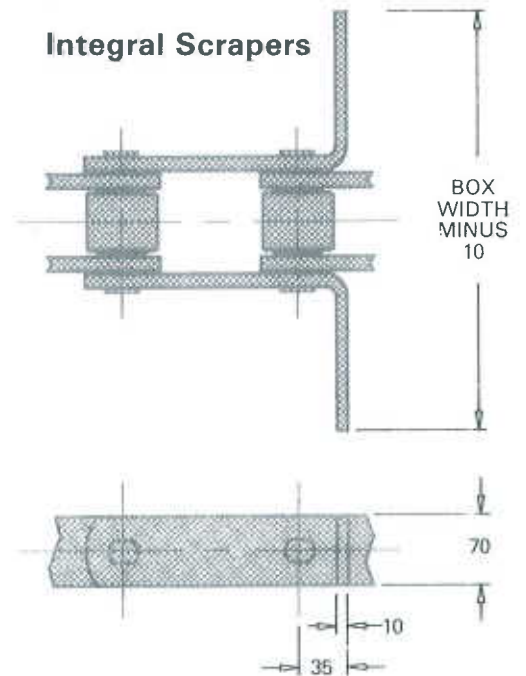
| PITCH | ROLLERLESS | | SMALL PLAIN ROLLER | | LARGE PLAIN ROLLER | | FLANGED ROLLER | |
|-------|------------|-------------|--------------------|-------------|--------------------|-------------|----------------|-------------|
| | REF. | WEIGHT kg/m | REF. | WEIGHT kg/m | REF. | WEIGHT kg/m | REF. | WEIGHT kg/m |
| 160 | M315R160 | 18.3 | M315S160 | 20.5 | M31L160 | 34.4 | M315F160 | 36.6 |
| 200 | M315R200 | 16.7 | M315S200 | 18.6 | M315L200 | 29.6 | M315F200 | 31.3 |
| 250 | M315R250 | 15.6 | M315S250 | 17.1 | M315L250 | 25.9 | M315F250 | 27.3 |
| 315 | M315R315 | 14.6 | M315S315 | 15.8 | M315L315 | 22.9 | M315F315 | 23.8 |
| 400 | M315R400 | 13.9 | M315S400 | 14.8 | M315L400 | 20.3 | M315F400 | 21.3 |
| 500 | M315R500 | 13.3 | M315S500 | 14.1 | M315L500 | 18.5 | M315F500 | 19.2 |

Double flats on stud and bush.

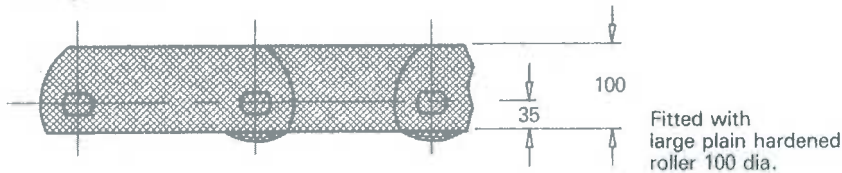
Connecting Links



Integral Scrapers



Deep Link



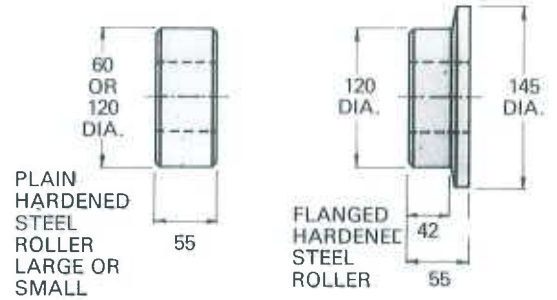
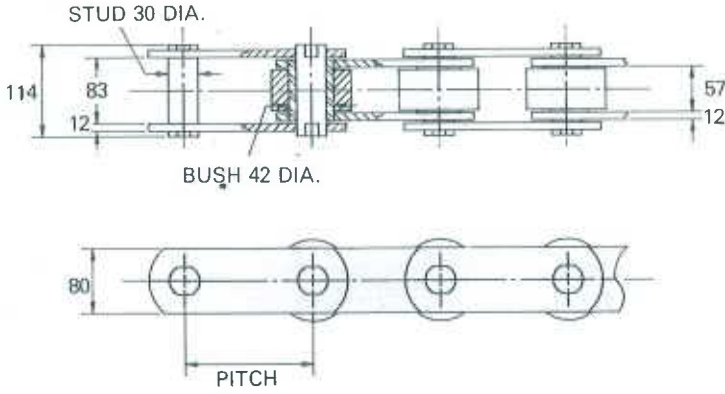
| PITCH | 160 | 200 | 250 | 315 | 400 | 500 |
|------------|----------|----------|----------|----------|----------|----------|
| CHAIN REF. | N315L160 | N315L200 | N315L250 | N315L315 | N315L400 | N315L500 |
| MASS kg/m | 40.5 | 35.4 | 31.5 | 28.3 | 25.6 | 23.6 |

| WIDTH OF BOX | 250 | 300 | 350 | 400 |
|------------------------|-----|-----|-----|-----|
| EXTRA MASS kg PER PAIR | 0.9 | 1.2 | 1.5 | 1.7 |

Chain Series M 450

Solid Stud 450 kN (45,887 kgf) TS.
Stud/Bush Bearing Area 2400 mm²

- Finish**
- a. Normal — dipped in grease.
 - b. Works — lightly oiled.
 - c. Oven — graphite coating.
 - d. Zinc — zinc coating throughout.
 - e. Moly — MoS₂ coating, round parts only.
 - f. Rape — dipped in rape oil.
 - g. Oil — dipped in light machine oil.
- Materials**
- k. Normal — standard steels.
 - l. Enhanced — special materials and/or heat treatment.
 - r. Low Corrosion — 431 hardened stainless round parts.
 - ii. Medium Corrosion — 431 hardened stainless round parts other components in 300 stainless.
 - u. Higher Corrosion — 300 stainless throughout.
 - w. Marine/Chemical — 316 stainless throughout.
 - y. Hot Oven — 310 stainless, except attachments.



| PITCH | ROLLERLESS | | SMALL PLAIN ROLLER | | LARGE PLAIN ROLLER | | FLANGED ROLLER | |
|-------|------------|-------------|--------------------|-------------|--------------------|-------------|----------------|-------------|
| | REF. | WEIGHT kg/m | REF. | WEIGHT kg/m | REF. | WEIGHT kg/m | REF. | WEIGHT kg/m |
| 160 | M450R160 | 26.3 | M450S160 | 31.4 | M450L160 | 51.3 | M450F160 | 53.9 |
| 200 | M450R200 | 24.0 | M450S200 | 27.3 | M450L200 | 45.8 | M450F200 | 47.9 |
| 250 | M450R250 | 22.2 | M450S250 | 24.8 | M450L250 | 39.6 | M450F250 | 41.5 |
| 315 | M450R315 | 20.7 | M450S315 | 22.7 | M450L315 | 34.5 | M450F315 | 36.0 |
| 400 | M450R400 | 19.6 | M450S400 | 21.2 | M450L400 | 30.5 | M450F400 | 31.5 |
| 500 | M450R500 | 18.6 | M450S500 | 20.0 | M450L500 | 26.5 | M450F500 | 28.2 |

Double flats on stud and bush.

Connecting Links

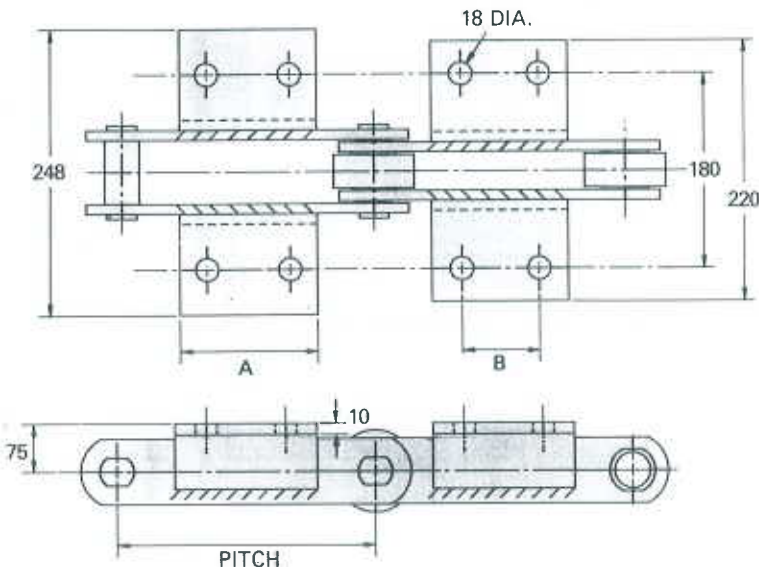


RIVET TYPE

SPLIT PIN TYPE

Welded K Type Attachments

K1 = 1 HOLE K2 = 2 HOLES



| CHAIN PITCH | LENGTH A | HOLE CENTRES B | MASS kg EACH |
|-------------|----------|----------------|--------------|
| 160 | 125 | 85 | 1.1 |
| 200 | 40 | (one hole) | 0.4 |
| 200 | 125 | 85 | 1.1 |
| 250 | 125 | 85 | 1.3 |
| 315 | 195 | 155 | 2.0 |
| 400 | 280 | 240 | 2.9 |
| 500 | 280 | 240 | 2.9 |

Can be spaced as required, one or both sides of chain.

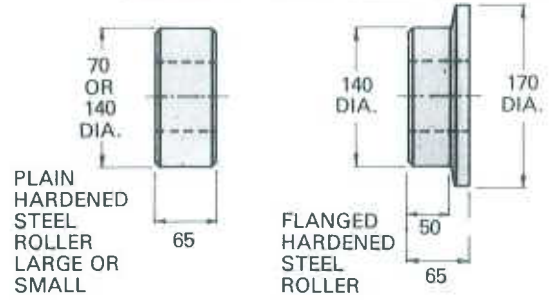
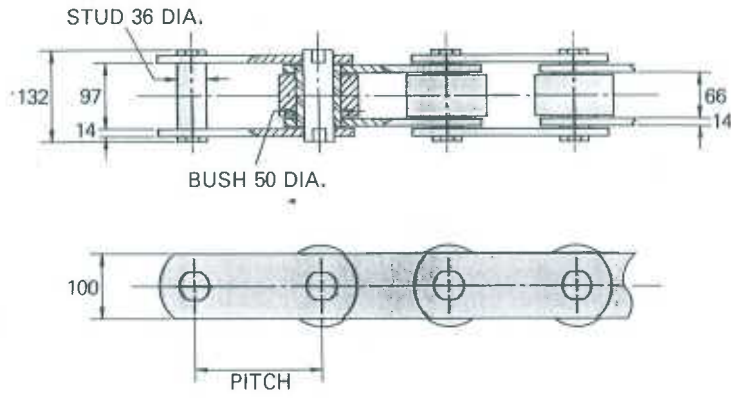
A nut can be welded below the attachment holes when required.

Chain Series M 630

Solid Stud 630 kN (64,241 kgf) TS.

Stud/Bush Bearing Area 3400 mm²

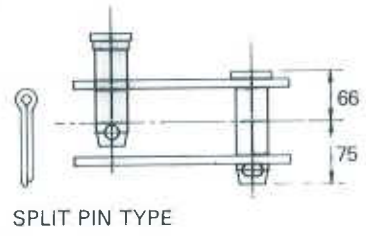
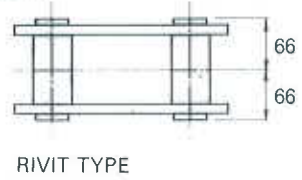
- Finish**
- a. Normal – dipped in grease.
 - b. Works – lightly oiled.
 - c. Oven – graphite coating.
 - d. Zinc – zinc coating throughout.
 - e. Moly – MoS₂ coating, round parts only.
 - f. Rape – dipped in rape oil.
 - g. Oil – dipped in light machine oil.
- Materials**
- k. Normal – standard steels.
 - l. Enhanced – special materials and/or heat treatment.
 - r. Low Corrosion – 431 hardened stainless round parts.
 - s. Medium Corrosion – 431 hardened stainless round parts other components in 300 stainless.
 - u. Higher Corrosion – 300 stainless throughout.
 - w. Marine/Chemical – 316 stainless throughout.
 - y. Hot Oven – 310 stainless, except attachments.



| PITCH | ROLLERLESS | | SMALL PLAIN ROLLER | | LARGE PLAIN ROLLER | | FLANGED ROLLER | |
|-------|------------|-------------|--------------------|-------------|--------------------|-------------|----------------|-------------|
| | REF. | WEIGHT kg/m | REF. | WEIGHT kg/m | REF. | WEIGHT kg/m | REF. | WEIGHT kg/m |
| 200 | M630R200 | 37.8 | M630S200 | 42.6 | M630L200 | 72.8 | M630F200 | 76.4 |
| 250 | M630R250 | 34.5 | M630S250 | 39.3 | M630L250 | 62.5 | M630F250 | 65.4 |
| 315 | M630R315 | 32.0 | M630S315 | 35.2 | M630L315 | 54.1 | M630F315 | 53.6 |
| 400 | M630R400 | 30.1 | M630S400 | 32.5 | M630L400 | 47.6 | M630F400 | 49.3 |
| 500 | M630R500 | 28.3 | M630S500 | 30.3 | M630L500 | 42.3 | M630F500 | 43.7 |
| 630 | M630R630 | 27.0 | M630S630 | 28.6 | M630L630 | 38.2 | M630F630 | 39.2 |

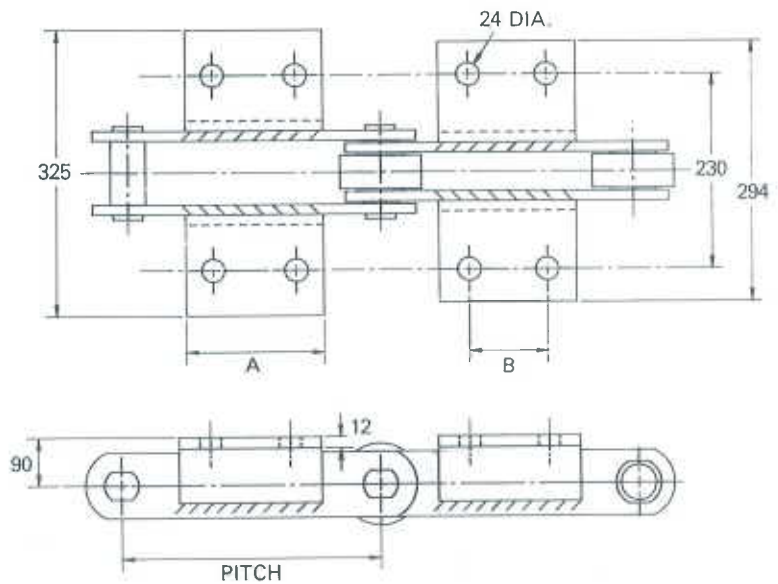
Double flats on stud and bush.

Connecting Links



Welded K2 Attachments

| CHAIN PITCH | LENGTH A | HOLE CENTRES B | MASS kg EACH |
|-------------|----------|----------------|--------------|
| 250 | 50 | (one hole) | 0.9 |
| 250 | 150 | 100 | 2.7 |
| 315 | 150 | 100 | 2.7 |
| 400 | 240 | 190 | 4.3 |
| 500 | 350 | 300 | 6.2 |
| 630 | 350 | 300 | 6.2 |



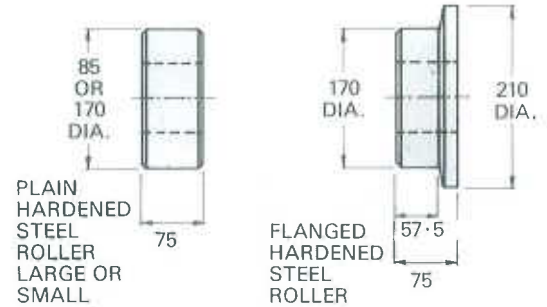
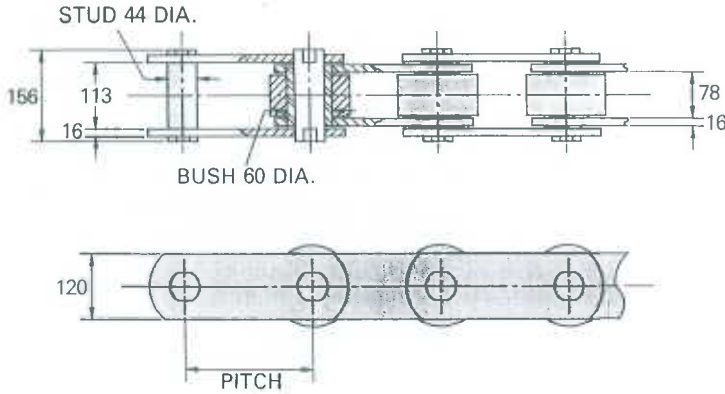
Can be spaced where required, one or both sides of chain.
A nut can be welded below the attachment holes when required.

Chain Series M 900

Solid Stud 900 kN (91,774 kgf) TS.

Stud/Bush Bearing Area 4900 mm²

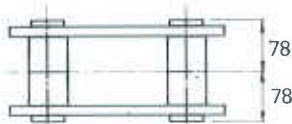
- Finish**
- a. Normal — dipped in grease.
 - b. Works — lightly oiled.
 - c. Oven — graphite coating.
 - d. Zinc — zinc coating throughout.
 - e. Moly — MoS₂ coating, round parts only.
 - f. Rape — dipped in rape oil.
 - g. Oil — dipped in light machine oil.
- Materials**
- k. Normal — standard steels.
 - l. Enhanced — special materials and/or heat treatment.
 - r. Low Corrosion — 431 hardened stainless round parts.
 - s. Medium Corrosion — 431 hardened stainless round parts other components in 300 stainless.
 - u. Higher Corrosion — 300 stainless throughout.
 - w. Marine/Chemical — 316 stainless throughout.
 - y. Hot Oven — 310 stainless, except attachments.



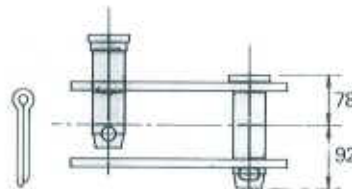
| PITCH | ROLLERLESS | | SMALL PLAIN ROLLER | | LARGE PLAIN ROLLER | | FLANGED ROLLER | |
|-------|------------|-------------|--------------------|-------------|--------------------|-------------|----------------|-------------|
| | REF. | WEIGHT kg/m | REF. | WEIGHT kg/m | REF. | WEIGHT kg/m | REF. | WEIGHT kg/m |
| 250 | M900R250 | 51.1 | M900S250 | 58.0 | M900L250 | 99.9 | M900F250 | 106.1 |
| 315 | M900R315 | 46.9 | M900S315 | 52.2 | M900L315 | 85.6 | M900F315 | 90.1 |
| 400 | M900R400 | 43.4 | M900S400 | 47.6 | M900L400 | 74.0 | M900F400 | 77.4 |
| 500 | M900R500 | 40.8 | M900S500 | 44.2 | M900L500 | 65.3 | M900F500 | 68.1 |
| 630 | M900R630 | 38.8 | M900S630 | 41.4 | M900L630 | 58.1 | M900F630 | 60.4 |

Double flats on stud and bush.

Connecting Links



RIVET TYPE



SPLIT PIN TYPE

Welded K Attachments

K1 = 1 HOLE K2 = 2 HOLES

| CHAIN PITCH | LENGTH A | HOLE CENTRES B | MASS kg EACH |
|-------------|----------|----------------|--------------|
| 250 | 50 | (one hole) | 1.6 |
| 315 | 125 | 65 | 3.3 |
| 400 | 215 | 155 | 5.7 |
| 500 | 300 | 240 | 8.0 |
| 630 | 300 | 240 | 8.0 |

Can be spaced where required, one or both sides of chain.

A nut can be welded below the attachment hole when required.

