

SKF Biodegradable bearing grease

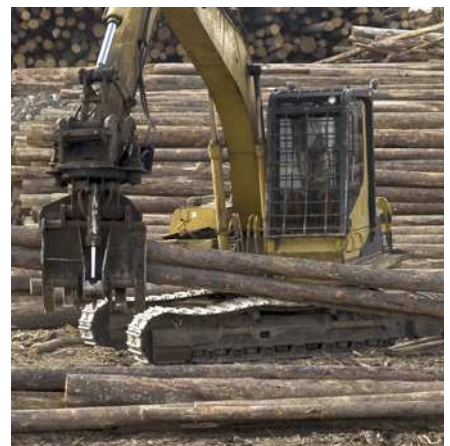
LGGB 2

SKF LGGB 2 is a biodegradable, low toxicity, synthetic ester oil based grease, using a lithium-calcium thickener. Its special formulation makes it most suitable for applications where environmental contamination is a concern.

- Compliance with current regulations on toxicity and biodegradability
- Good performance in applications with steel-on-steel spherical plain bearings, ball bearings and roller bearings
- Good low temperature start-up performance
- Good corrosion inhibiting properties
- Suitable for medium to high loads

Typical applications

- Agricultural and forestry equipment
- Construction and earthmoving equipment
- Mining and conveying equipment
- Water treatment and irrigation
- Locks, dams, bridges
- Linkages, rod ends



Available pack sizes

Packsize	Designation
420 ml cartridge	LGGB 2/0.4
5 kg can	LGGB 2/5
18 kg pail	LGGB 2/18
180 kg drum	LGGB 2/180
Gas driven lubricator	
LAGD series 125 ml	LAGD 125/GB2



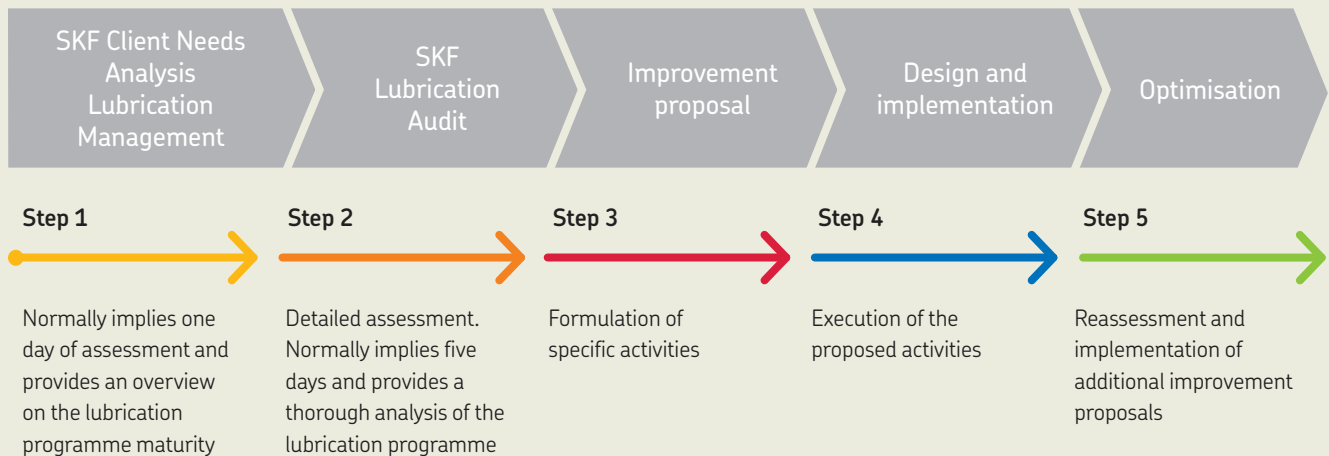
Technical data

Designation	LGGB 2/(pack size)		
DIN 51825 code	KPE 2K-40	Corrosion protection	Emcor: – standard ISO 11007
NLGI consistency class	2	Water resistance	DIN 51 807/1, 3 hrs at 90 °C
Thickener	Lithium/calcium	Oil separation	DIN 51 817, 7 days at 40 °C, static, %
Colour	Off white	Lubrication ability	R2F, running test B at 120 °C
Base oil type	Synthetic ester	Rolling bearing grease life	ROF test L ₅₀ life at 10 000 r/min., hrs
Operating temperature range	–40 to +90 °C (–40 to +195 °F)	EP performance	Wear scar DIN 51350/5, 1 400 N, mm
Dropping point DIN ISO 2176	>170 °C (>340 °F)	Shelf life	4–ball test, welding load DIN 51350/4, N
Base oil viscosity			
40 °C, mm ² /s	110		
100 °C, mm ² /s	13		
Penetration DIN ISO 2137			
60 strokes, 10 ⁻¹ mm	265–295		
100 000 strokes, 10 ⁻¹ mm	+50 max. (325 max.)		
Mechanical stability			
Roll stability, 50 hrs at 80 °C, 10 ⁻¹ mm	+70 max. (350 max.)		

¹⁾ Typical value

Lubrication management

Just as asset management takes maintenance to a higher level, a lubrication management approach allows lubrication to be seen from a wider point of view. This approach helps to effectively increase machine reliability at a lower overall cost.



skf.com | mapro.skf.com | skf.com/lubrication

© SKF is a registered trademark of the SKF Group.

© SKF Group 2017

The contents of this publication are the copyright of the publisher and may not be reproduced (even extracts) unless prior written permission is granted. Every care has been taken to ensure the accuracy of the information contained in this publication but no liability can be accepted for any loss or damage whether direct, indirect or consequential arising out of the use of the information contained herein.

PUB MP/P8 12049/2 EN · June 2017

Certain image(s) used under license from Shutterstock.com.